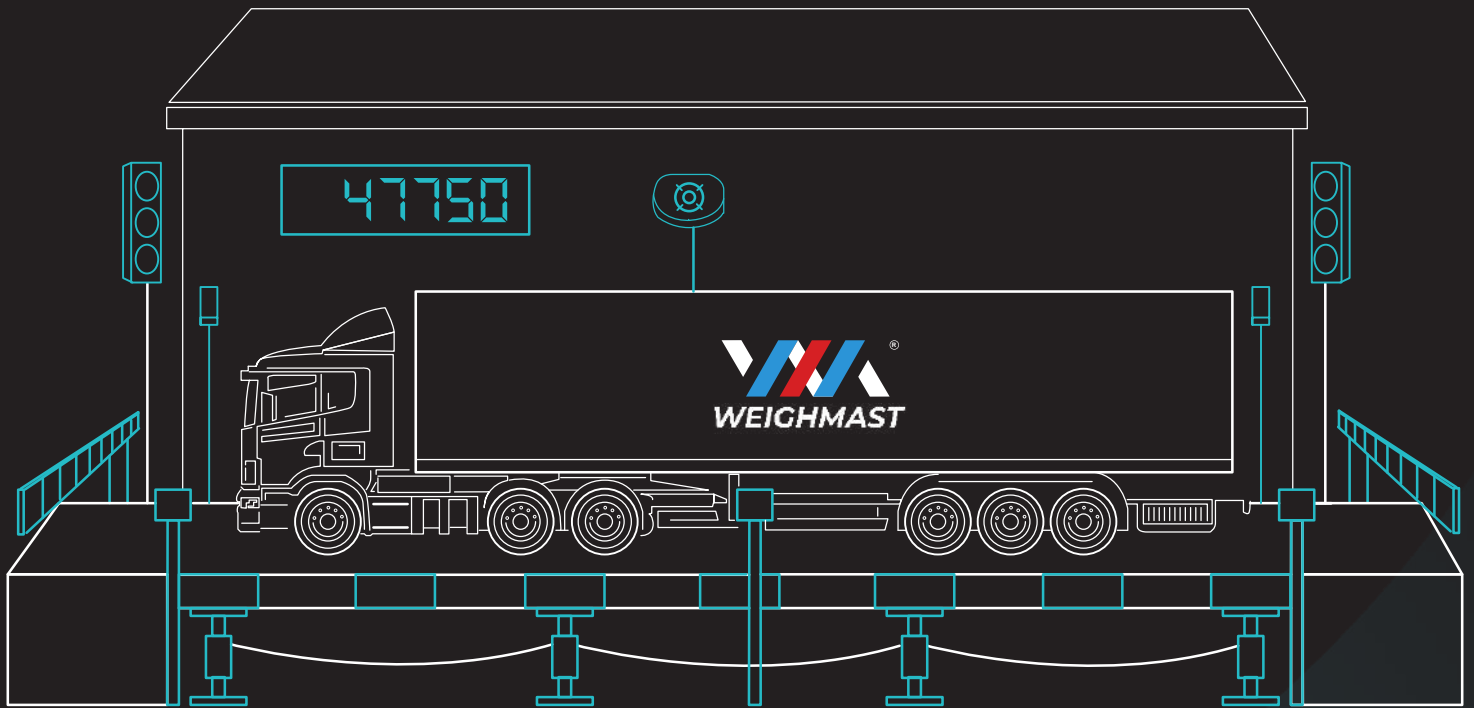


UNMANNED WEIGHING



WHAT IS UNMANNED WEIGHING?

Weighing automation is the future of weighing operations. Industries across the globe require weighing to measure materials across all the phases of the supply chain, which makes human reliance and dependency very dangerous. Endel Digital Solutions is here to solve all the problems created by the traditional weightment systems.



Manpower costs

Sites that run 24/7 operations require multiple weighbridge operators, the wages of the operators and the supervisors are a significant cost to the organization

Delay in operations

Manpower-dependent operations always experience delays due to unforeseen circumstances.



Errors in data capturing

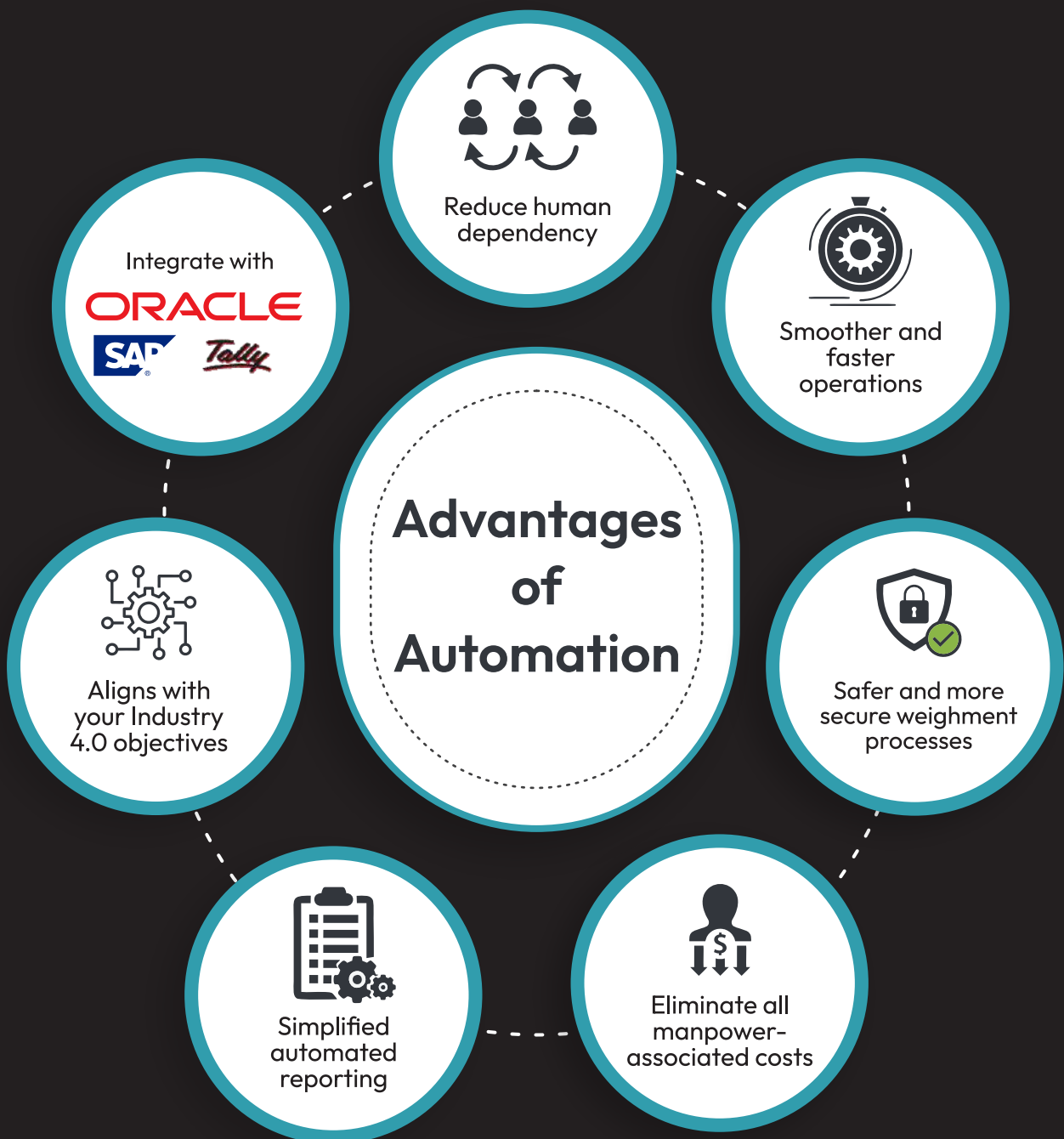
Intentional or unintentional errors in the data capturing can cause significant discrepancies and issues moving ahead in the supply chain operations.

Difficulty in supervision and reporting

As all the data is manually captured, there are high chances of errors, which are difficult to fix at a later stage, and manually prepared reports are time consuming and inaccurate due to the inaccurate data.



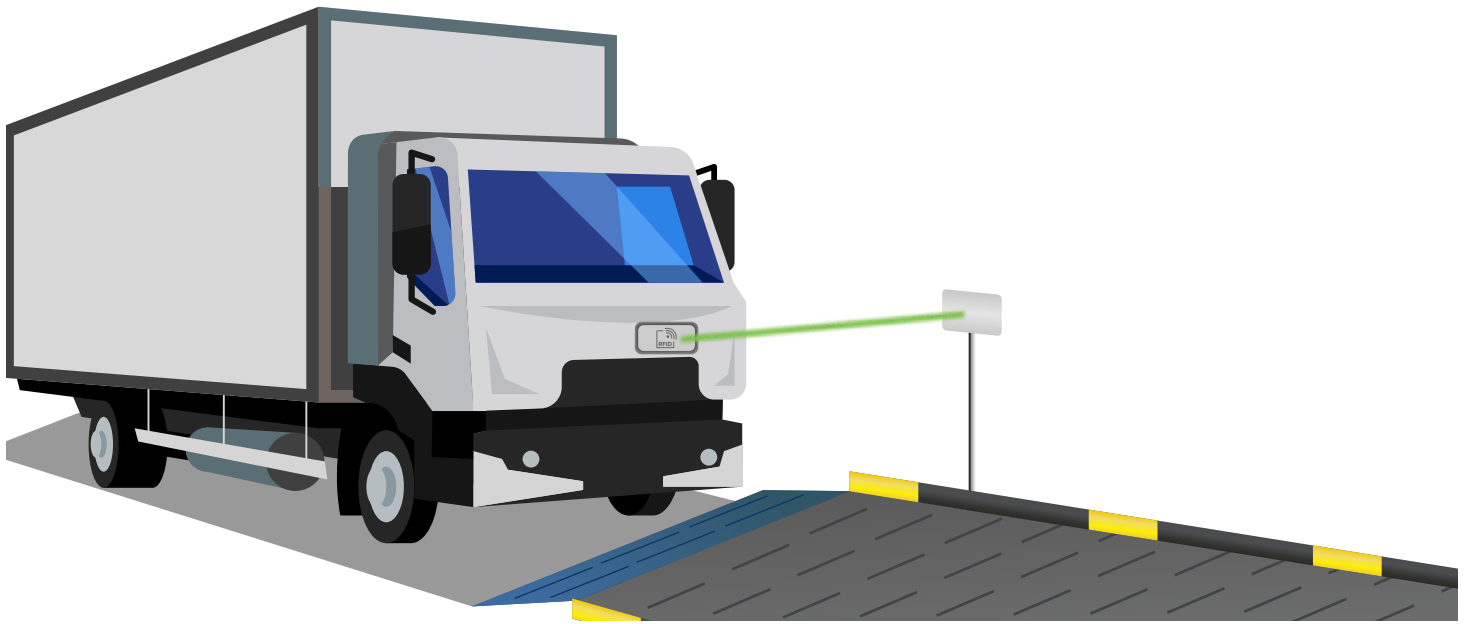
WHY SHOULD YOU INVERT IN UPGRADING YOUR WEIGHBRIDGE?



HOW DOES AN UNMANNED SYSTEM WORKS?

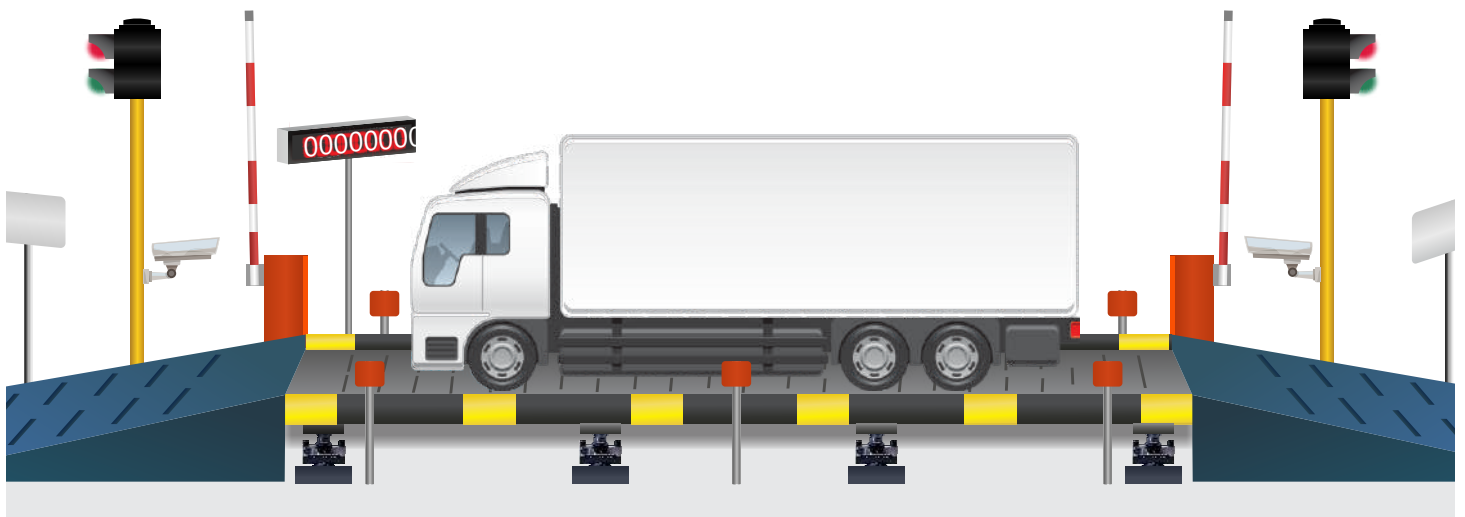
Phase 1: Authorization

This is a fail-safe method to ensure that only authorized trucks are entering the premises. Only after the data is captured from the RFID or the ANPR system, does the boom barrier open, and the truck enters the weighbridge.



Phase 2: Positioning

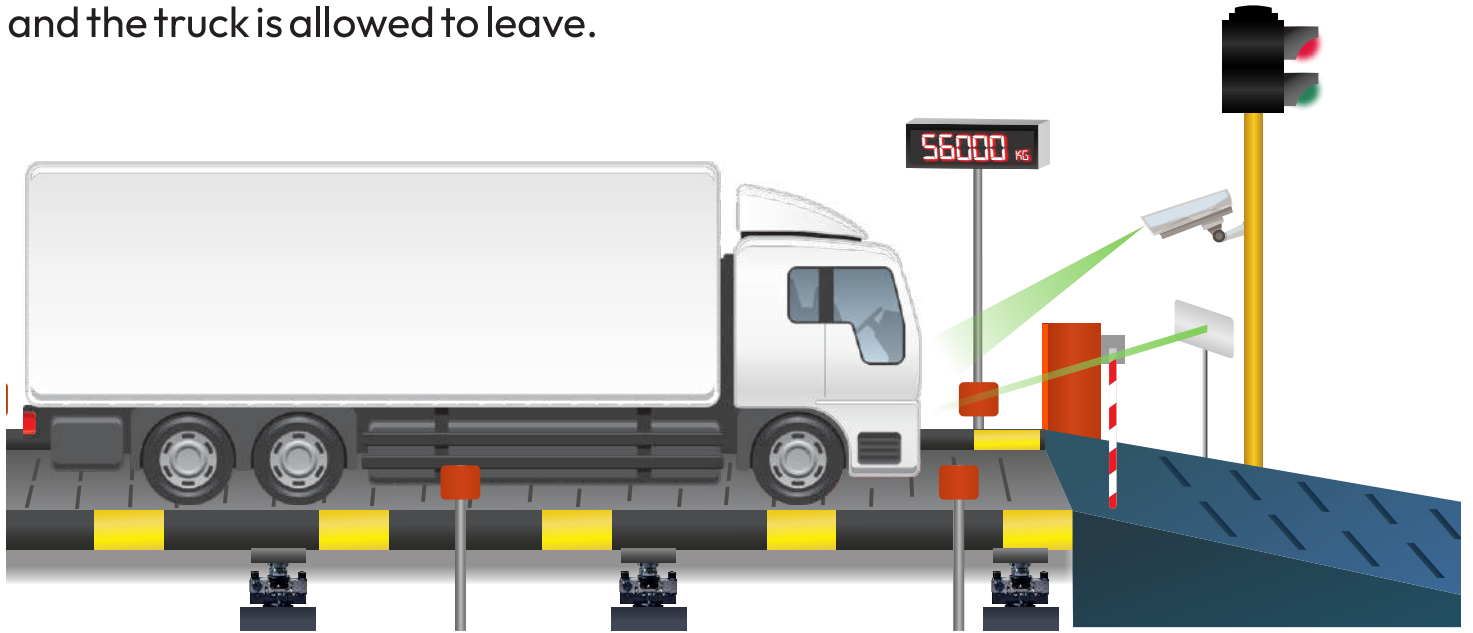
Mispositioned trucks do not give accurate weighment, this would cause the wrong data to be stored, and affect the rest of the supply chain processes. Our Unmanned System utilized position sensors to ensure that every single truck weighment is accurate.



HOW DOES AN UNMANNED SYSTEM WORKS?

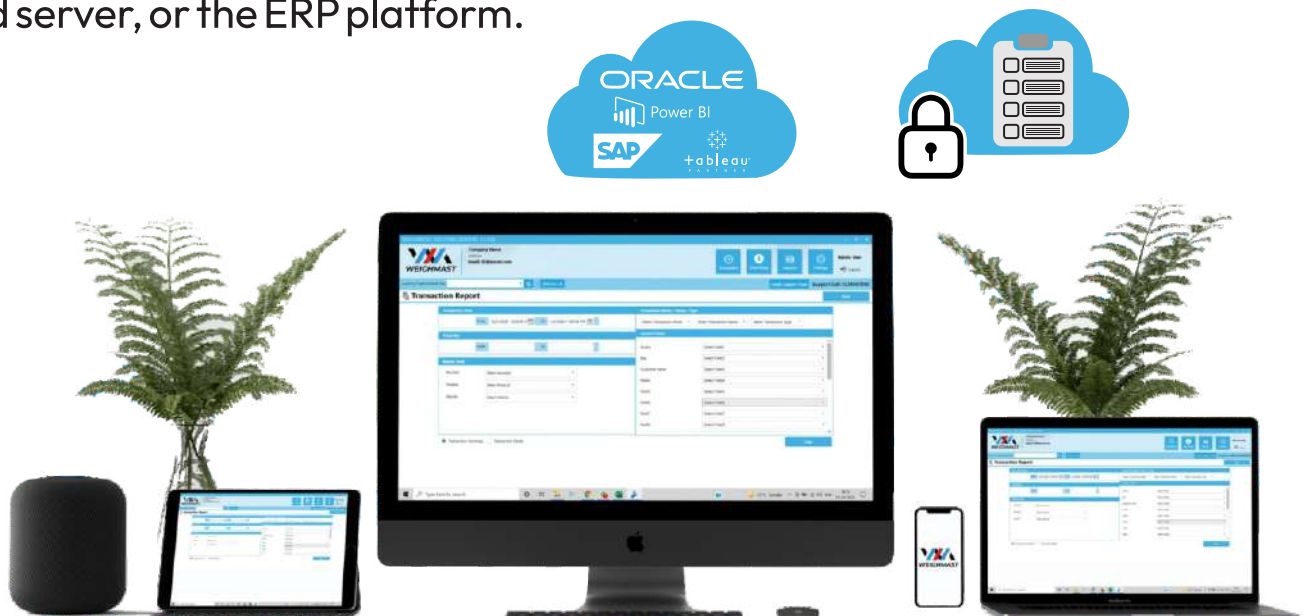
Phase 3: Weighment

CCTV/IP cameras are present to enhance security and safety. The system automatically captures various images of the truck, and stores it along with the weighment data. After all the data is stored on the system, the barriers open and the truck is allowed to leave.



Phase 4: Transaction completion

After the gross/tare weights are measured, automated text alerts/email alerts are shared to all relevant personnel. All the information, including the photos of the truck, are ready to view on all platforms, this includes the software, the cloud server, or the ERP platform.



HARDWARE COMPONENTS



Control panel



RFID Reader /
ANPR Camera



IP Camera



Position sensors



Barricades



Traffic lights



Jumbo display



Announcement
system

SOFTWARE COMPONENTS

WeighMAST - Weighbridge data management software

This enterprise-focused weighbridge management software is suitable for any organization which requires accuracy, visibility, and traceability in its operations. **WeighMAST** allows companies to automate their entire weighbridge operation to achieve the same.

The screenshot shows the WeighMAST software interface. At the top left is the WeighMAST logo. To its right, user information is displayed: Company Name, Address, and Email: ID@server.com. On the top right, there are navigation buttons for Transaction, Data Setup, Reports, and Settings, along with an Admin User profile and a Logout button. Below this is a search bar for 'Load by Ticket/Vehicle No.' and a 'New (Ctrl + N)' button. A 'Create Support Ticket' button and 'Support Call: 1234567890' are also present. The main section is titled 'Transaction Report' and includes a 'Back' button. The report area is divided into several sections: 'Transaction Date' with a date range from 12/21/2021 12:00:00 A to 1/5/2022 11:59:59 PM; 'Transaction Mode / Status / Type' with dropdown menus; 'Ticket No' with a range selector; 'Master Field' with dropdowns for Account, Product, and Vehicle; and 'Custom Fields' with dropdowns for Gunny, Bag, Customer name, and Fields 4 through 8. At the bottom, there are radio buttons for 'Transaction Summary' (selected) and 'Transaction Detail', and a 'Filter' button.



Automation software

This is a state-of-the-art automation software devised by our team, to ensure that all the various hardware components work seamlessly with one another. The complete automation system allows for every individual hardware to work in tandem and provide a complete weighing experience without any human intervention.

Cloud server integration (Optional)

WeighMAST on Cloud is the perfect solution for anyone operating remotely. If you are managing multiple weighbridges across various sites, this is the easiest way to consolidate all data on a single platform and view it from any browser. Get real-time data updates on your mobile, tablet, or PC.



ERP Integration

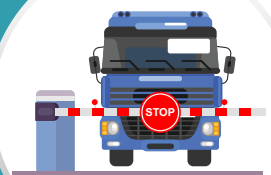
WeighMAST ERP integration allows for simplified workflow management, whilst eliminating the risk of inaccurate data entries. Integrate all your weighbridge operations with any ERP system, including Tally. Implement smart contract management with the help of our ERP integration, and take your organization towards Industry 4.0.

ORACLE



Gate management integration

Large organizations need to ensure security at their premises, integrate WeighMAST with your gate management system to better manage, control, and monitor all of your vehicle gate logs. Contact us to know more about our complete Gate management and Warehouse management system.



OUR OTHER PRODUCTS



Unmanned Weighing

Fully automated your weighbridge system to eliminate data inaccuracies, and chances of theft, by removing the need for any human intervention.



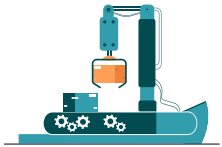
Gate management

Manage, control, and monitor the complete vehicle logs and visitor logs to your premises.



Tank weighing

Our tank weighing software solution helps you ensure that all the operations of your silos, tanks, hoppers, and vessels, are running smoothly to help endorse the productivity of your manufacturing processes.



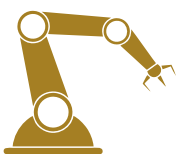
Batch processing

Enhance your batch manufacturing processes with our state-of-the-art solution to automate your checklists, worksheets, and reports.



Bluetooth mobile applications

Bluetooth mobile applications for weighing scales, are the easiest and efficient manner to capture the weighment data on your device, without any tampering of data.



State-of-the-art industrial automation solutions

We design and engineer custom- automated control solutions that reduce your overhead costs and wastages, to give your business the competitive edge that it needs to succeed.

Manufacturing
Process Digitisation



IOT Sensors



SCADA
Integration



AI - based trend
Analysis

GATEONE

Secure Gate
Management



Weighing
Automation



Quality
Testing Process
Management

FL=ETAI

Dispatch
Management
Solution



Dispatch Management For India's Largest RMC Company

Visitor Management and weighing automation system for World's second largest refinery

Weighing automation and Visitor Management System for Largest cement company in Uganda



Visitor Management and weighing automation System for largest oil and gas exploration company in Nigeria

PIMS (Plant Information Management) Enhanced plant information management system, streamlining data insights and boosting operational efficiency.

LIMS (Laboratory Management) and inventory management solution for complete tyre testing and R&D lab.



ARCHIRODON



Complete port logistics movement monitoring solution to enhance security and visibility.



Godrej Agrovet- farmer management system for palm oil production
Godrej Construction- weighing automation across all sites in Maharashtra region

Secure gate management | Weighing automation
Quality testing process management | Dispatch management solution

Contact Us Now
To Know More

Endel Digital Solutions Pvt Ltd

A- Block, 8th Floor, Swati Trinity,
Nr. Shantipura Circle, Outside Applewood
Township, Ahmedabad – 380054, Gujarat, India.

Phone No : +91 99796 12342

Email : info@endel.digital

Website : www.endel.digital



Recognised by Indian Government as an innovative startup in business analytics & intelligence

#startupindia

gusec

OPC UA